



ESG

Net-Zero

Climate Resilience

CERTIFIED SUSTAINABILITY (ESG) PRACTITIONER PROGRAM

Content Index

• Program Overview.....	3
• Client Testimonial.....	5
• CSE Practitioners Profile.....	6
• Practitioner Program Versions.....	7
• Modules.....	8
• Benefits of attending.....	17
• Optional Additional Specializations & Courses.....	19
• GRI Course with the ESG Practitioner Program.....	21
• Group Programs.....	22
• Lead Tutors.....	23
• Comparison Table.....	24
• CSE is a leader in Corporate Sustainability.....	25
• Education Awards, Certifications & Partnerships.....	27

Program Overview

This challenging **three (3)-day – via Live Sessions – digital Sustainability (ESG) program** offered by CSE aims to give you all the latest practical tools and resources required to implement, integrate and upscale corporate Sustainability Strategies and ESG ratings in order to drive your organization to the next level.

Earn the globally recognized Sustainability & ESG Certificate and seize the opportunity to get an additional specialization via **Dual Certification Process** in one of the most important fields (e.g. Reporting, Net Zero).





OVER
10.000
Certified Sustainability
(ESG) Practitioners



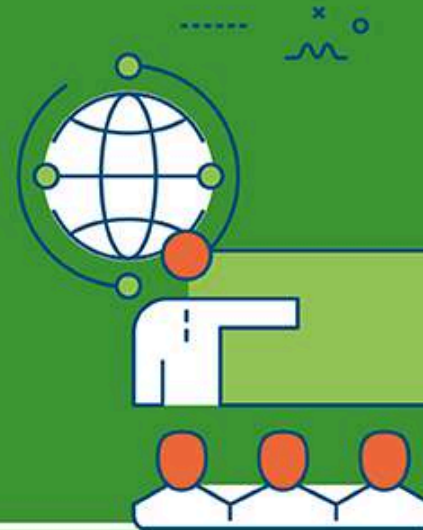
The leading Course
in Sustainability
and Corporate
Responsibility
globally
20 **Years**
Anniversary

Participants
from **5**
continents



90 countries in North
and Central America,
Europe, Middle East, Asia

90%
of
FORTUNE
500
Sustainability and CR/ESG
Directors and CSOs
have attended it



Over **250** Clients in
Sustainability
(more than **200**
Sustainability Reports)



CLIENT TESTIMONIAL

"Just as important to meeting the goals, is the evidence and data needed to support them. Without a baseline understanding of key concepts across the organization, we would not be able to achieve either. We spend a ton of time training the trainer. Take classes like CSE Sustainability (ESG) Practitioner and then disseminate across the population".

Sam Mitchell

Director-Global Sustainability @ORACLE

Client Testimonial...



"The Program offered valuable insights, with diverse perspectives from peers and trainers proved invaluable, sparking new ideas and valuable connections."

Mariana Delgado

CSR Project Manager



"The case studies and the interaction with other members of the group. Applying theory to "real" business and organizations."

SAMANTHA PEELE



"Being exposed to different industries, from all over the globe. Also, the case studies were my favorite to review".

Anna Orzel

Senior Product Manager at UNFCU



"Extending the network and getting in contact with other "sustainability ambassadors" added value to the training program".

BJOERN VAN LAAK

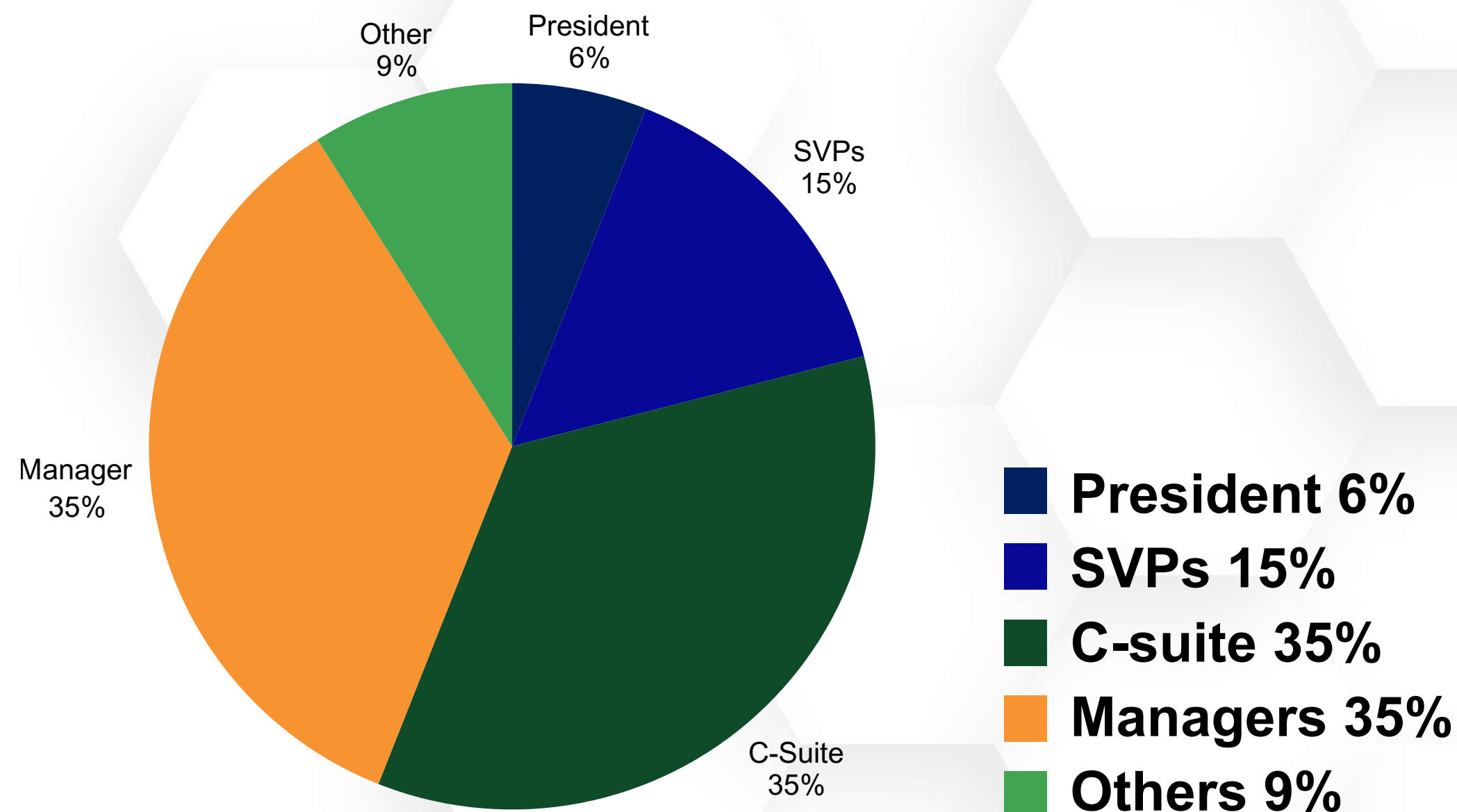
CSE Practitioners are a diverse group of Mid to Senior Level Professionals and Leaders

90+

COUNTRIES 

40+

INDUSTRIES 



Practitioner Program Versions

LEADERSHIP

An exclusive version aimed at corporate decision-makers and C-level executives to address sustainability challenges, develop strategy and vision, and improve ESG ratings and stakeholder relations.

ADVANCED

Open to CSR/sustainability professionals of all functions, including procurement, operations, and not-for-profits, interested in gaining exposure to sustainability and ESG in a business context.



Both versions share the same training structure and certification process, with agenda emphasis varying based on attendee profiles.

Modules 1-6

What you will learn

Advanced certified education on ESG, Sustainability and Circular Economy for professionals who want to acquire cutting-edge knowledge, get a globally recognized certification and maximize their company's impact. CSE's programs are trusted by more than 10.000 Certified Sustainability Practitioners from over 90 countries all over the world.

- 1 Sustainability (ESG) and the Business Case for Adoption
- 2 Global and Local Legislation for Sustainability and GHG Emissions
- 3 Sustainability Strategies and Most Widely Used Standards & ESG Ratings
- 4 Sustainability (ESG) Reporting Based on GRI Standards and Other ESG Guidelines
- 5 Responsible Communication And How To Avoid Green & Blue Washing
- 6 Circular Economy and the Importance of Sustainability in Supply Chain
- * Future Trends
- ** On net zero, scope 3, supply chain sustainability, upcoming legislations

Module 1

Sustainability (ESG) and the Business Case for Adoption

- **Sustainability and ESG Concepts**
- **Definitions and Interpretations of Sustainability (ESG)**
- **The Business Case for Sustainability**
- **Sustainability (ESG) Related Risks**
- **Global Risks - World Economic Forum**
- **Course Methodology: How to Succeed in Sustainability (ESG)**

Module 2

Global and Local Legislation for Sustainability and GHG Emissions

- **The Sustainable Development Goals for 2030**
- **Local Legislation and Regulations for GHG Emissions and Sustainability**
- **The Corporate Sustainability Reporting Directive (CSRD)**
- **Canadian Sustainability Disclosure Standards (CSDS1 & CSDS2)**
- **Canadian Sustainability Standards Board (CSSB) Reporting**
- **Climate Data Accountability Act (CCDAA)**

Module 3

Global and Local Legislation for Sustainability and GHG Emissions

- **How to successfully apply and integrate sustainability**
- **The Importance of Stakeholders**
- **How to Create a Strategy and Engage with the Stakeholders**
- **Exercise: Identifying Organizational Stakeholders & Corporate Risks**
- **Guidelines and Rating Indexes for Sustainability**
- **The Importance of ESG**
- **Sustainability (ESG) Strategy**
- **ESG Ratings**

Module 4

Sustainability (ESG) Reporting Based on GRI Standards and Other ESG Guidelines

- **Value of Sustainability reporting**
- **Steps for Sustainability Report Creation**
- **Materiality Assessment**
- **Double Materiality**
- **Exercise: Materiality**
- **Key Factors for Effective Reporting**
- **GRI Universal Standards**
- **SASB, TCFD, ISSB**
- **ESRS Standards**
- **External Assurance**

Module 5

Responsible Communication And How To Avoid Green & Blue Washing

- **Responsible Communication**
- **Green and Cause-Related Marketing**
- **How to Avoid Green & Blue Washing**
- **How to Avoid SDG Washing Best**
- **Practices for Communication**
- **Greenwashing Exercise**

Module 6

Circular Economy and the Importance of Sustainability in Supply Chain

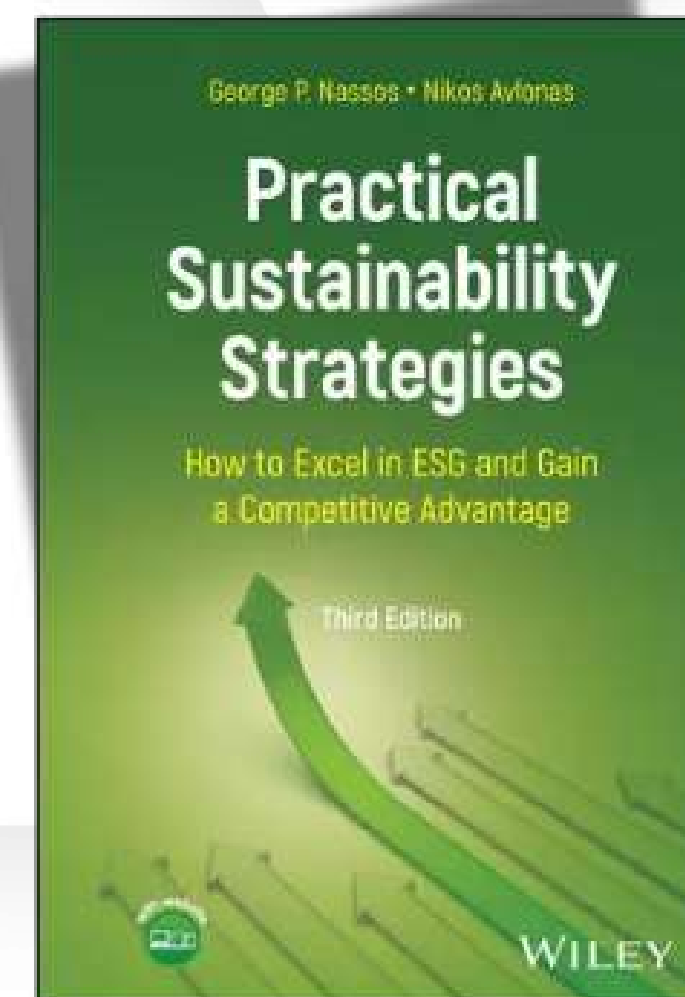
- **Circular Economy: Definition and Case Studies**
- **Circular Economy – The Boundary Tool**
- **Circular Economy Frameworks**
- **Sustainability in Supply Chain**
- **UN Practical Guide • Case Studies**
- **Carbon Management Greenhouse Gas Protocol**
- **Science-based Targets**
- **Net Zero**

Extra Material

**Gain free access
to the eBook:**

Practical Sustainability Strategies: How to Excel in ESG and Gain a Competitive Advantage, 3rd Edition

A comprehensive guide for developing and implementing ESG strategies that propel sustainable growth and enhance corporate responsibility.



Extra Material

- **Future Trends**
- **On net zero, scope 3, supply chain sustainability, upcoming legislations**

- **Circular Economy: Definition and Case Studies**
- **Circular Economy – The Boundary Tool**
- **Circular Economy Frameworks**
- **ESG Trends, Standards & Ratings**
- **Sustainability in Supply Chain**
- **Scope 3, TCFD, Net-zero**
- **ESRS Standards**
- **SEC: Climate Disclosure Rule**

Benefits of attending one of the leading programs globally:

01

Earn a globally recognized **Sustainability & ESG Certificate**

02

Access 10 hours of live training with **two experienced international tutors**

03

Benefit from **8 weeks of additional guided content and platform access**

04

Learn how to integrate ESG into business functions and strategy

Benefits of attending one of the leading programs globally:

05

Enhance reporting skills aligned with **GRI, IFRS, TCFD, and CSRD**

06

Get a complimentary copy of the eBook Practical Sustainability Strategies by Nikos Avlonas

07

Develop a custom **2-year sustainability action plan** for your organization

08

Join a **network of 10,000+ trained professionals**, including leaders from Fortune 500 companies

Optional Additional Specializations & Courses

1

Get certified as a **Sustainability ESG Practitioner** if you register for this program only!

2

Get the **Dual Certification** by doing in of the dual specialization courses.

3

Join the Global | GRI Standards, Certified Training Course (New Version on ESG Reporting) and get the **Official Certificate of Attendance** issued Directly from the Global Reporting Initiative (GRI), the world's leading standard setter for sustainability disclosure.

Dual Certification Package

Sustainability (ESG) Practitioner Program Certification

+

Specialization and Certificate in one of the following fields
via CSE's Certified Online (Recorded) Courses:

- [Carbon Reduction and Net Zero](#)
- [Sustainability \(ESG\) Reporting](#)
- [Sustainable Supply chain](#)
- [SASB-TCFD](#)
- [Green Marketing](#)

Upon registration request 1 ticket under the category Dual (2)
Certification Package ESG & Specialization

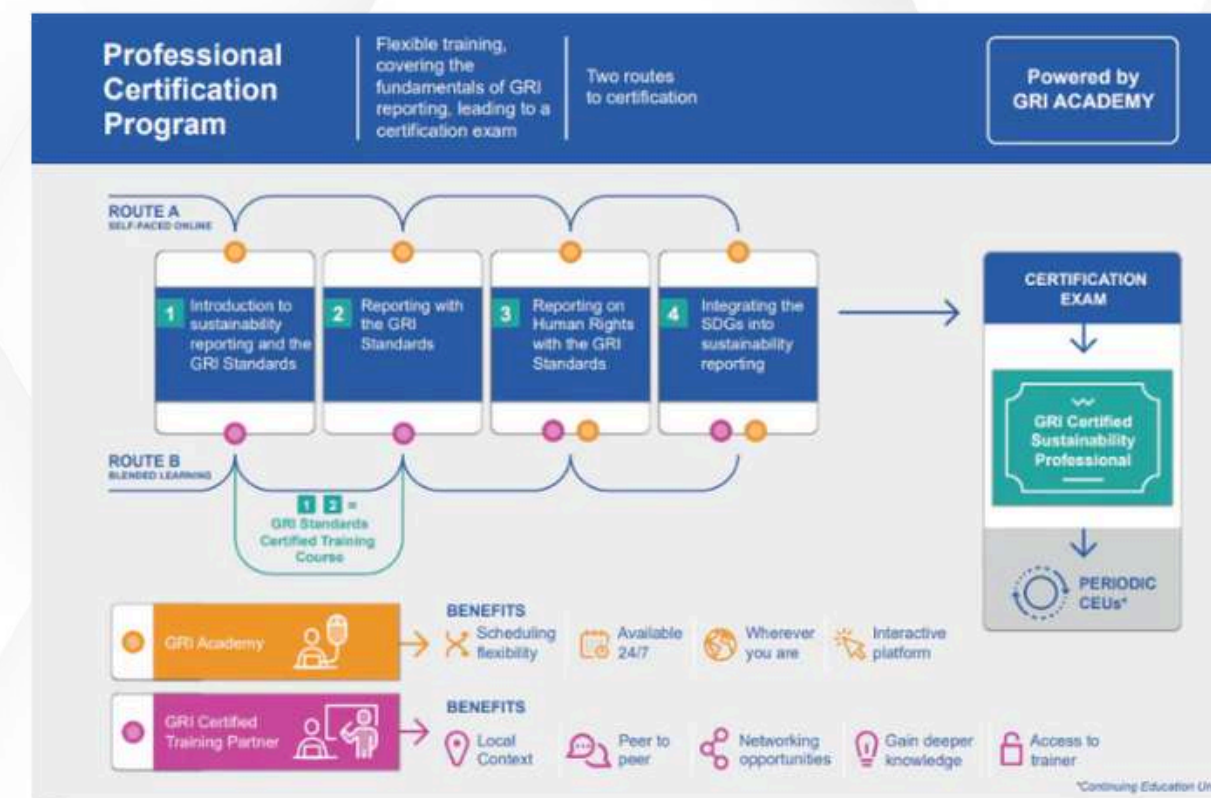
Why GRI Course is complementary with the ESG Practitioner Program

1. The **GRI Course** is focused on the **understanding and application of the new GRI standards to the Sustainability Report**.
2. The **Certified Sustainability-ESG Practitioner course** provides an overview of the **ESG Standards, Ratings and Criteria** and offers in depth information on how to create an ESG strategy (including Net Zero plan) and integrate it within **different divisions and your supply chain**.
3. **Attending both courses will provide you an in depth view of ESG criteria and official certifications from the leading accreditation providers in Sustainability (GRI,CMI & CPD).**



TRAINING PARTNER

2025



Group Programs

Need targeted training on CSR, ESG, or Net Zero?

CSE offers customized workshops for executive teams, highlighting the business value of sustainability and its benefits for key stakeholders.

22

- [Online Diploma on Corporate Sustainability: Foundation Course](#)
- [Online Certificate on CSRD & ESRS Standards](#)
- [Online Certificate in Renewable Energy Fundamentals: The Path to Net Zero](#)
- [Certified Climate Resilient Officer \(CRO\)](#)
- [Online Certificate on Sustainability for Yachting Professionals](#)
- [Online Certificate on ESG Ratings and Investments](#)
- [Certified Circular Economy Professional](#)
- [Introduction to Social Impact Assessment and SROI Reporting](#)
- [Online Diploma on Social Entrepreneurship](#)

Lead Tutors



Nikos Avlonas – Lead Tutor

Founder and President of CSE

Nikos Avlonas is Founder and President of the Centre for Sustainability & Excellence (CSE), a global Sustainability Strategic Advisory and Training organization with activities in North America, Europe, MENA and Asia regions.



Karen Malone – Lead Tutor

Associate, CSE Lead Trainer

Karen Malone is a Sustainability Consultant and Trainer for CSE. The LitPark founder, is an experienced facilitator of ESG training programs expanding the intelligence and strategic knowhow for 250+ executives in over 20 different industries.



Rosalinda Sanquiche – Lead Tutor

CSE Trainer, Communication Expert

Rosalinda Sanquiche comes to CSE from Ethical Markets Media where she was Executive Director, coordinating programs and research projects from the Green Transition Scoreboard to the Ethical Money Directory, collaborating with colleagues around the world. Rosalinda is one of CSE's trainers and communications experts focused on Sustainability Reporting.



Lena Mamidakis – Lead Tutor

CSE trainer, Head of Strategic Development

Lena Mamidaki is the Head of Strategic Development at CSE and an experienced trainer on Sustainability and ESG. She has studied Business Administration (B.Sc. in Business Administration) at Boston University in the U.S.A and has obtained a Master's degree in International and European Relations (M.A. in European Studies) from the University of Reading in the U.K.



Thomas Weber – Lead Tutor

Certified Sustainability (ESG)

Professional

Thomas Weber is a Certified Sustainability (ESG) Professional, coordinating CSE's North America Consulting Services. Thomas is located in Chicago, USA.



Takeshi Shimotaya – Lead Tutor

Advisory board of CSE

Takeshi Shimotaya is on the advisory board of CSE. Takeshi is the Founder and Managing Director of Sustainavision Ltd, a London based consulting firm, supporting the development and promotion of sustainable thinking. Sustainavision Ltd is a strategic partner of CSE, appointed to deliver the CMI approved Certified Sustainability (CSR) Practitioner Training in Japan.



Marina Alonistiotti – Lead Tutor

Senior Sustainability Consultant

Marina Alonistiotti has been a Senior Sustainability Consultant at the Centre for Sustainability and Excellence (CSE) since 2008. Marina is a senior expert in carbon footprint assessment, strategy, Lifecycle Assessment (LCA) and environment related initiatives with experience in related projects in Europe, North America and the Middle East.



Alex Ham – Lead Tutor

Senior Sustainability Consultant

Alex has been a trainer and practitioner of sustainability for nearly 15 years and the last years a Sustainability consultant and Trainer for CSE. His diverse experience involves sustainable urban planning & development, building envelope performance (LEED), alternative energy planning and application, health and safety & preparedness.

Comparison Table

	Certified Sustainability (ESG) Practitioner	Universities Professional Certified Education	ESG Standards Specific Trainings	Other Certified Trainings
Live session with Thought Leaders – Tutors with Practical Experience in the Field	10 Hours	Self - paced	Self - paced	Self - paced
Up-to-date Training Material	✓	✓	✓	✓
Free E-book (Bestseller – Valued at \$82.95) *	✓	✗	✗	✗
20 years of thought leadership in sustainability education	✓	✗	✗	✗
Attended by the majority (>80%) of FORTUNE 500 companies	✓	✗	✗	✗
Accreditations (e.g CPD)	✓	✓	✗	✗
Brief Modules for Key Sectors	✓	✗	✗	✗

*Practical Sustainability Strategies: How to Gain a Competitive Advantage, Wiley
Publication, 2nd Edition – Written by CSE's Lead Trainer, Nikos Avlonas

CSE is a leader in Corporate Sustainability Education



> **CSE** WORLDWIDE ACTIVITIES*

Awards, Certifications & Partnerships



International Awards



GRI & SASB

GRI global training partner.
CSE is SASB's first training partner.



International Certifications & Partnerships





Secure your spot ***TODAY!***

Corporate Website

<https://cse-net.org/>

Email Address

info@cse-net.org